

COVID-19 Protocol for families

As of 1/04/2021

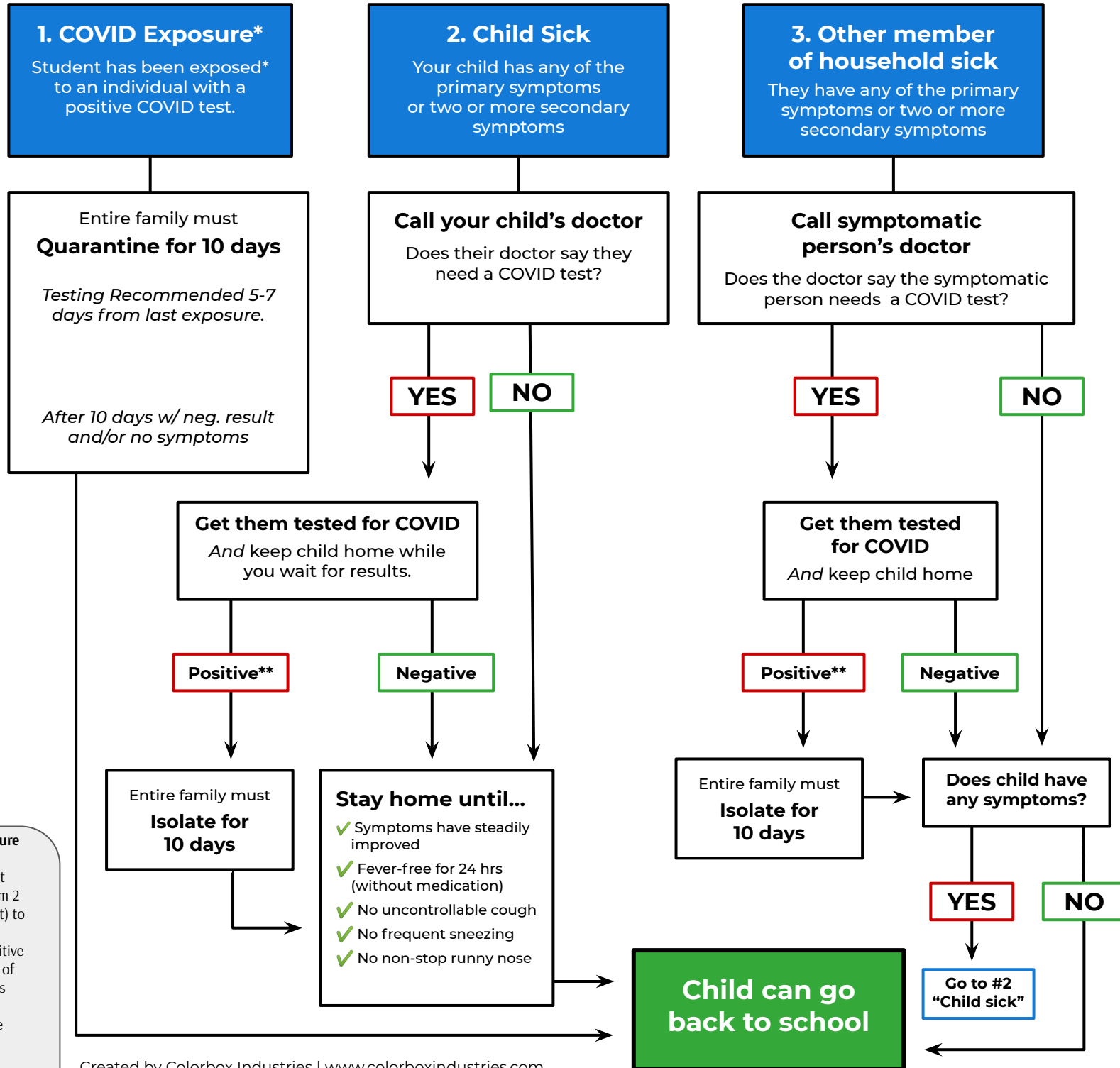
COVID Symptoms

PRIMARY

- Fever of 100° or higher
- Cough
- Sore throat
- New loss of taste or smell
- New muscle aches
- Nausea, vomiting, diarrhea
- Difficulty breathing

SECONDARY

- Headache
- Runny nose
- Congestion
- Fatigue
- Any other sign of illness



* CDC defines an **exposure** as close contact (being within 6 ft of them for at least 15 min starting from 2 days before illness onset) to an infected person.
 ** PBS will report a positive case to the Archdiocese of Los Angeles, Los Angeles County Department of Public Health, and those exposed to the case.